



# GAT MONTHLY MEMBERSHIP PROGRESS REPORT

Results as of: 5/31/2023

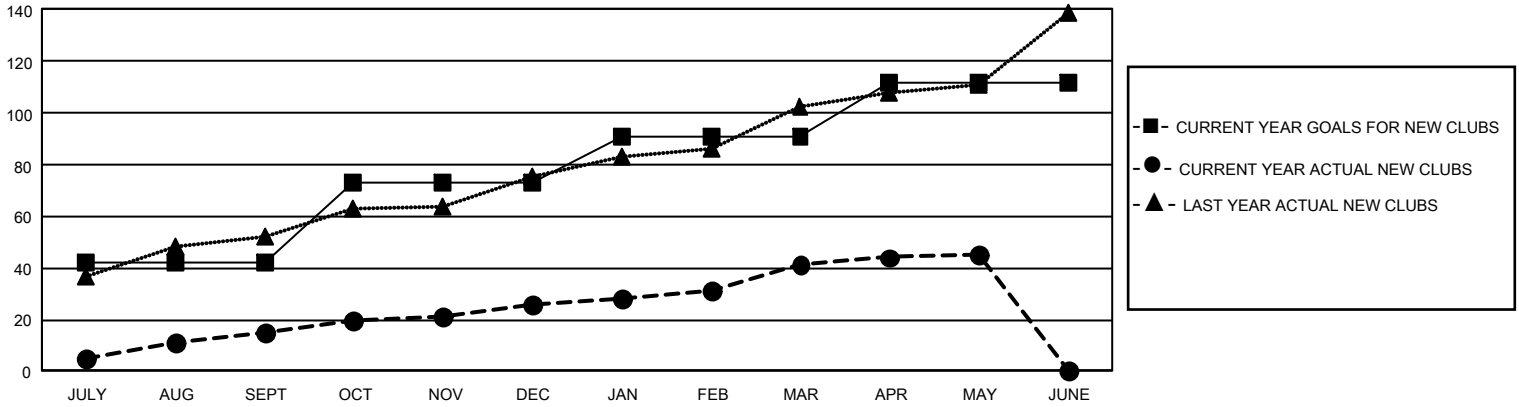
## GMT Constitutional Area 6, Group H

REPORT DOES NOT INCLUDE CLUBS IN UNDISTRICTED AREAS.

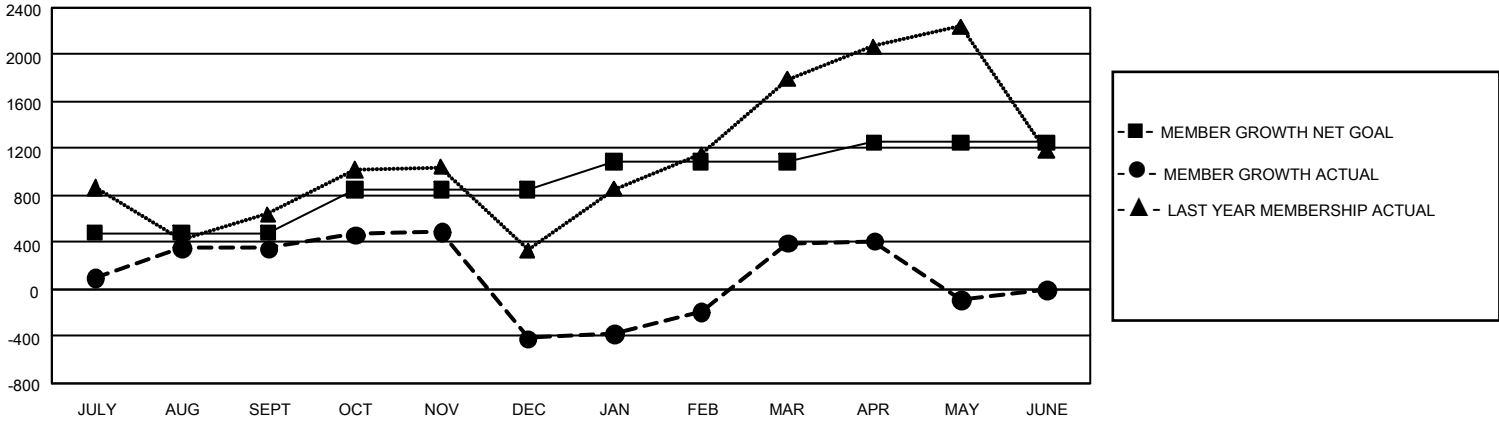
Clubs			
RESULTS FOR 2022-2023			
QUARTER	NEW CLUB GOAL	NEW CLUBS	DROPPED CLUBS
JULY/AUG/SEPT	126	15	8
OCT/NOV/DEC	93	11	36
JAN/FEB/MAR	54	15	13
APR/MAY/JUNE	63	4	0

Members			
RESULTS FOR 2022-2023			
QUARTER	MEMBER GROWTH NET GOAL	MEMBER GROWTH ACTUAL	DROPPED MEMBERS ACTUAL (including transfers)
JULY/AUG/SEPT	480	1,337	845
OCT/NOV/DEC	370	938	1,647
JAN/FEB/MAR	235	1,690	630
APR/MAY/JUNE	165	557	962

GOALS AND ACTUAL NEW CLUBS CUMULATIVE



GOALS AND ACTUAL MEMBERS CUMULATIVE



<b>DROPPED CLUBS: 57</b>	618 CLUBS OF 1,175 ADDED 1 OR MORE NEW MEMBERS	<b>GENDER DISTRIBUTION</b>	
		MALE 22,206 (67.80%) FEMALE 10,533 (32.16%) NON BINARY 0 (0.00%) PREFER NOT TO ANSWER 13 (0.04%)	
<b>DROPPED MEMBERS</b>		<a href="#">CLICK HERE FOR CUMULATIVE MEMBERSHIP DATA</a>	
DECEASED 79 CLUB CANCELLED 782 OTHER 3,223 <b>TOTAL 4,084</b>	TOTAL FAMILY UNIT MEMBERS 19,900 FAMILY MEMBERS PAYING HALF DUES 12,212		